

U.S. DRUG ENFORCEMENT ADMINISTRATION (DEA)

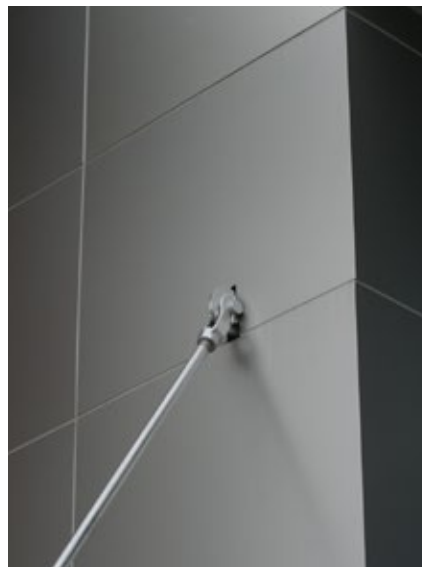
GENERAL CAPITAL
GROUP

MILWAUKEE, WISCONSIN



The U.S. Drug Enforcement Administration (DEA) had outgrown its downtown space and sought a new field and administrative office for its 45 employees. General Capital won the competitive selection process and constructed a build to suit 50,000 square foot building with secure indoor parking for 44 vehicles.

Two major design goals were to provide state of the art security features and a “green” building with a minimal environmental “footprint.” LEED design guidelines guided decisions about natural daylighting, energy efficiency, and indoor air quality, resulting in an office that enhances employee well-being and productivity.



An open floor plan and flexible building systems will allow the building to evolve and expand with changes in technology and business functions.

The importance of the building is expressed in the solid base formed by precast concrete panels under face brick with concrete lintels. An elegant building entrance is defined by composite metal panels and a glass curtain-wall system at the building core.